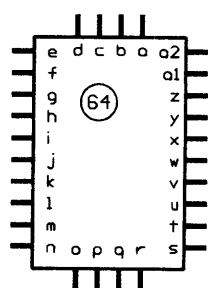


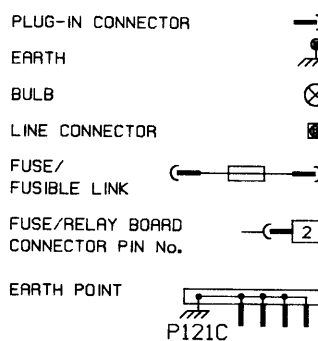
## NOTES:

1. All diagrams are divided into numbered circuits depending on function e.g. Diagram 2: Exterior lighting.
2. Items are arranged in relation to a plan view of the vehicle.
3. Items may appear on more than one diagram so are found using a grid reference e.g. 2/R1 denotes an item on diagram 2 grid location R1.
4. Complex items appear on the diagrams as blocks and are expanded on the internal connections page.
5. Not all items are fitted to all models.
6. For fuse information see specifications.
7. Wire identification is not by colour, but by letters or numbers appearing on the wire at each end.

## INTERNAL CONNECTION DETAILS



## KEY TO SYMBOLS



## KEY TO INSTRUMENT CLUSTER (ITEM 64)

a = Oil Pressure Warning Lamp  
 b = Ignition Warning Lamp  
 c = High Temp. Warning Lamp  
 d = Brake Warning Lamp  
 e = Brake Warning Lamp  
 f = Direction Indicator Lamp  
 g = Instrument Illumination  
 h = Earth  
 i = Main Beam Warning Lamp  
 j = Dipped Beam Warning Lamp  
 k = Instrument Illumination  
 l = Tachometer  
 m = Clock  
 n = +VE Supply  
 o = Choke Warning Lamp  
 p = Low Fuel Warning Lamp  
 q = Fuel Gauge  
 r = Sidelamp Warning Lamp

 KEY TO INSTRUMENT CLUSTER (ITEM 64)  
 (ADDITIONAL CONNECTIONS XU/TU MODELS ONLY)

s = Direction Indicator Lamp LH  
 t = Direction Indicator Lamp RH  
 u = Oil Level Warning Lamp  
 v = Oil Temperature Gauge  
 w = Coolant Temperature Gauge  
 x = Coolant Level Warning Lamp  
 y = + VE Supply  
 z = Earth  
 a1 = Oil Pressure Gauge  
 a2 = Injection System Warning Lamp

ITEM	DESCRIPTION	DIAGRAM/ GRID REF.
1	Air Flow Sensor . . . . .	1b/B5
2	Alternator . . . . .	1/C3, 1a/C3, 1b/B2, 2/C3
3	Ashtray Illumination . . . . .	2a/H4
4	Auto. Trans. Inhibitor Relay . . . . .	1/G4
5	Auto. Trans. Inhibitor Switch . . . . .	1/D5
6	Auto. Trans. Pump Control Relay . . . . .	1/G6
7	Battery . . . . .	1/C7, 1a/C7, 1b/C7, 2/C8, 2a/B7, 3/B7, 3a/B7
8	Brake Pad Wear Sensor . . . . .	1/D1, 1/D8, 1a/D1, 1a/D8, 1b/C1, 1b/C8
9	Central Locking Control Switch . . . . .	3a/K1
10	Central Locking Motor LH Front . . . . .	3a/K8
11	Central Locking Motor LH Rear . . . . .	3a/M8
12	Central Locking Motor RH Rear . . . . .	3a/M1
13	Central Locking Motor Tailgate . . . . .	3a/M5
14	Choke Switch . . . . .	1/J3, 1a/J3
15	Cigar Lighter . . . . .	2a/H4

# 12•16 Wiring diagrams

ITEM	DESCRIPTION	DIAGRAM/ GRID REF.	ITEM	DESCRIPTION	DIAGRAM/ GRID REF.
16	Cigar Lighter Illumination . . . . .	2a/H4	63	Ignition Switch . . . . .	1/J1, 1a/J1, 1b/K1, 2/F1, 2a/G1, 3/E1, 3a/F1
17	Clock . . . . .	2a/J3			
18	Combination Switch - Lighting, Direction Indicators And Horn . . . . .	2/J3, 2a/G3, 3/G3	64	Instrument Cluster . . . . .	1/H3, 1a/H3, 1b/K3, 2/F3, 2a/F3
19	Combination Switch - Wash/Wipe . . . . .	3/G3			
20	Coolant Temp. Gauge Sender Unit . . . . .	1a/D5, 1b/G4	65	Instrument Illumination Control . . . . .	2a/F3
21	Coolant Temp. Sensor . . . . .	1b/D5	66	Interior Lamp . . . . .	2a/D5
22	Coolant Temp. Switch . . . . .	1/B5, 1a/C5, 1b/G3	67	Interior Lamp Door Switch LH . . . . .	2a/C8
23	Cooling Fan Motor . . . . .	1/A5, 1a/B5	68	Interior Lamp Door Switch RH . . . . .	2a/C1
24	Cooling Fan Resistor . . . . .	1/G8, 1a/A5	69	Lamp Cluster LH Rear . . . . .	2/M7, 2a/M7
25	Cooling Fan Switch . . . . .	1/A3, 1a/B3	70	Lamp Cluster RH Rear . . . . .	2/M1, 2a/M1
26	Diagnostic Socket . . . . .	1/D6, 1a/D6, 1b/D2	71	Low Brake Fluid Sender Unit . . . . .	1/E2, 1a/E2, 1b/E2
27	Dim/Dip Relay . . . . .	2/E5	72	Low Coolant Sender Unit . . . . .	1b/F8
28	Dim/Dip Resistor . . . . .	2/E7	73	Luggage Comp. Lamp . . . . .	2a/L4
29	Direction Indicator Flasher Relay . . . . .	2a/E7	74	Luggage Comp. Lamp Switch . . . . .	2a/M4
30	Direction Indicator LH Front . . . . .	2a/A8	75	Map Reading Lamp . . . . .	2a/E5
31	Direction Indicator RH Front . . . . .	2a/A1	76	Number Plate Lamp . . . . .	2/M4, 2/M5
32	Distributor . . . . .	1/E6, 1a/E6, 1b/E5	77	Oil Level Indicator Unit . . . . .	1b/H5
33	Driving Lamp LH . . . . .	2/A6	78	Oil Level Sensor . . . . .	1b/G4
34	Driving Lamp Relay . . . . .	2/E4	79	Oil Pressure Sender Unit . . . . .	1b/G3
35	Driving Lamp RH . . . . .	2/A3	80	Oil Pressure Switch . . . . .	1/B5, 1a/C5, 1b/G4
36	Electric Window Motor LH Front . . . . .	3a/J8	81	Oil Temp. Sender Unit . . . . .	1b/H4
37	Electric Window Motor RH Front . . . . .	3a/J1	82	Radio/Cassette Unit . . . . .	3a/F5
38	Electric Window Relay . . . . .	3a/D6	83	Reversing Lamp Switch . . . . .	2/D5
39	Electric Window Switch LH . . . . .	3a/H8	84	Spark Plugs . . . . .	1/E5, 1a/E5, 1b/E4
40	Electric Window Switch RH (Drivers) . . . . .	3a/J1	85	Speaker LH Front . . . . .	3a/C8
41	Electric Window Switch RH (Passengers) . . . . .	3a/H1	86	Speaker RH Front . . . . .	3a/C1
42	Foglamp Rear . . . . .	2/M3	87	Starter Motor . . . . .	1/C6, 1a/C6, 1b/B6, 2/B5
43	Foglamp Switch . . . . .	2/G3	88	Stop-Lamp Switch . . . . .	2a/D3
44	Fuel Gauge Sender Unit . . . . .	1/M5, 1a/M5, 1b/M5	89	Supplementary Air Device . . . . .	1b/D5
45	Fuel Injection ECU . . . . .	1b/G6	90	Suppressor . . . . .	1/C2, 1b/B2
46	Fuel Injectors . . . . .	1b/D4	91	Tachymetric Relay . . . . .	1b/A7
47	Fuel Pump . . . . .	1/L6, 1b/M6	92	TDC Position Sensor . . . . .	1/C6, 1a/D6, 1b/D3
48	Glove Box/Lamp Switch . . . . .	2a/J7	93	Throttle Switch . . . . .	1b/B4
49	Handbrake Warning Switch . . . . .	1/L5, 1a/L5, 1b/K5	94	Washer Pump Front . . . . .	3/B8
50	Hazard Warning Lamp/Switch . . . . .	2a/F4	95	Washer Pump Rear . . . . .	3/M2
51	Headlamp Unit LH . . . . .	2/A7	96	Wiper Motor Front . . . . .	3/C3
52	Headlamp Unit RH . . . . .	2/A2	97	Wiper Motor Rear . . . . .	3/M5
53	Heated Rear Window . . . . .	3/M4	98	Wiper Relay Front . . . . .	3/E8, 3/J5
54	Heated Rear Window Relay . . . . .	3/E6	99	Wiper Relay Rear . . . . .	3/M6
55	Heated Rear Window Switch . . . . .	3/H3			
56	Heater Blower Motor . . . . .	3/H4			
57	Heater Blower Motor Control Unit . . . . .	3/C8			
58	Heater Blower Motor Speed Control . . . . .	3/J4			
59	Heater/Ventilation Illumination . . . . .	2a/H3			
60	Horn . . . . .	3/A8			
61	Ignition Coil . . . . .	1/E7, 1a/E7, 1b/E6			
62	Ignition Module . . . . .	1/E7, 1a/E6, 1b/E6			

Key to wiring diagrams (continued)

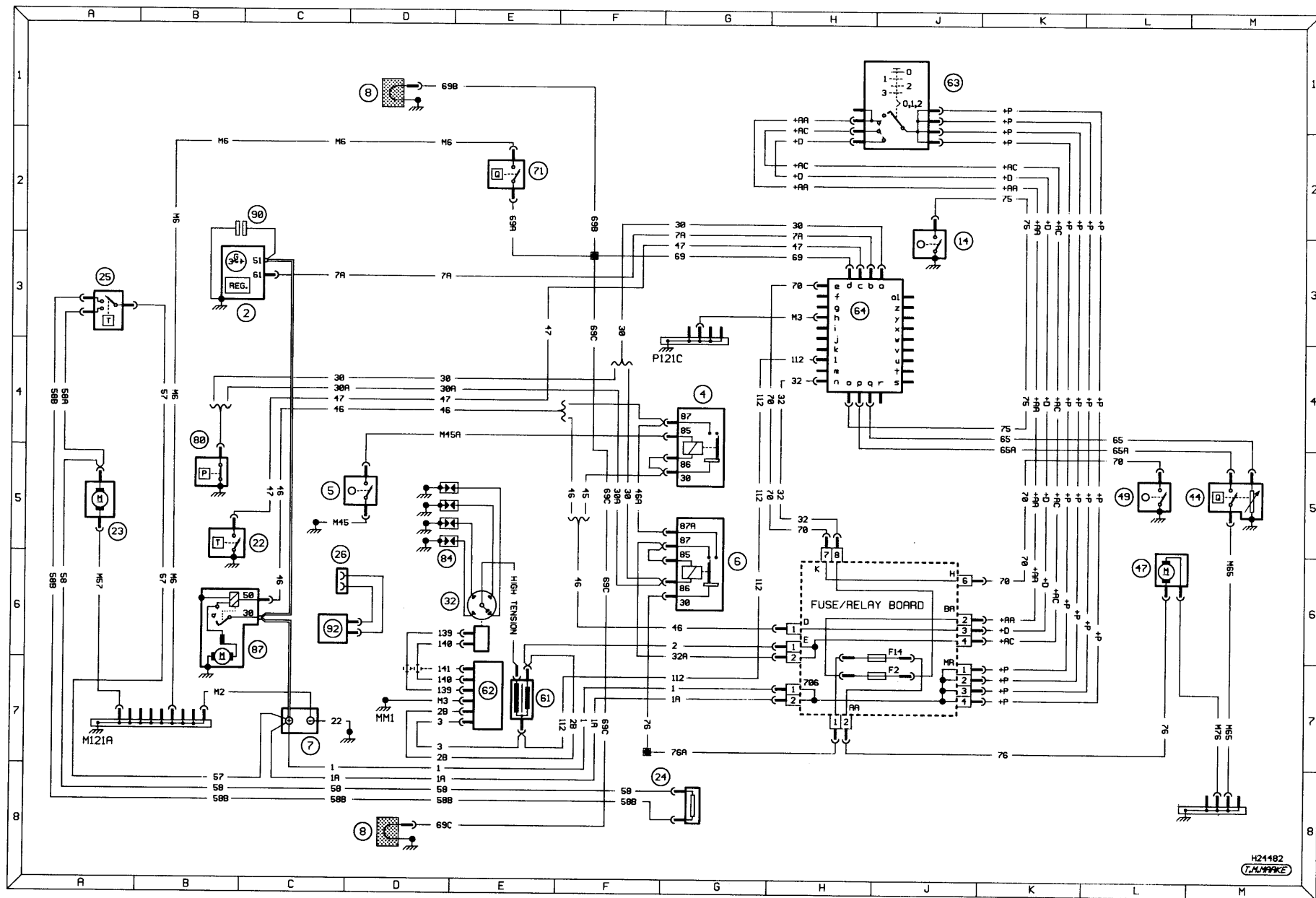


Diagram1: Typical starting, charging, ignition, cooling fan, warning lamps and gauges (XV8, XW7, XY8 and XU51C engine models)

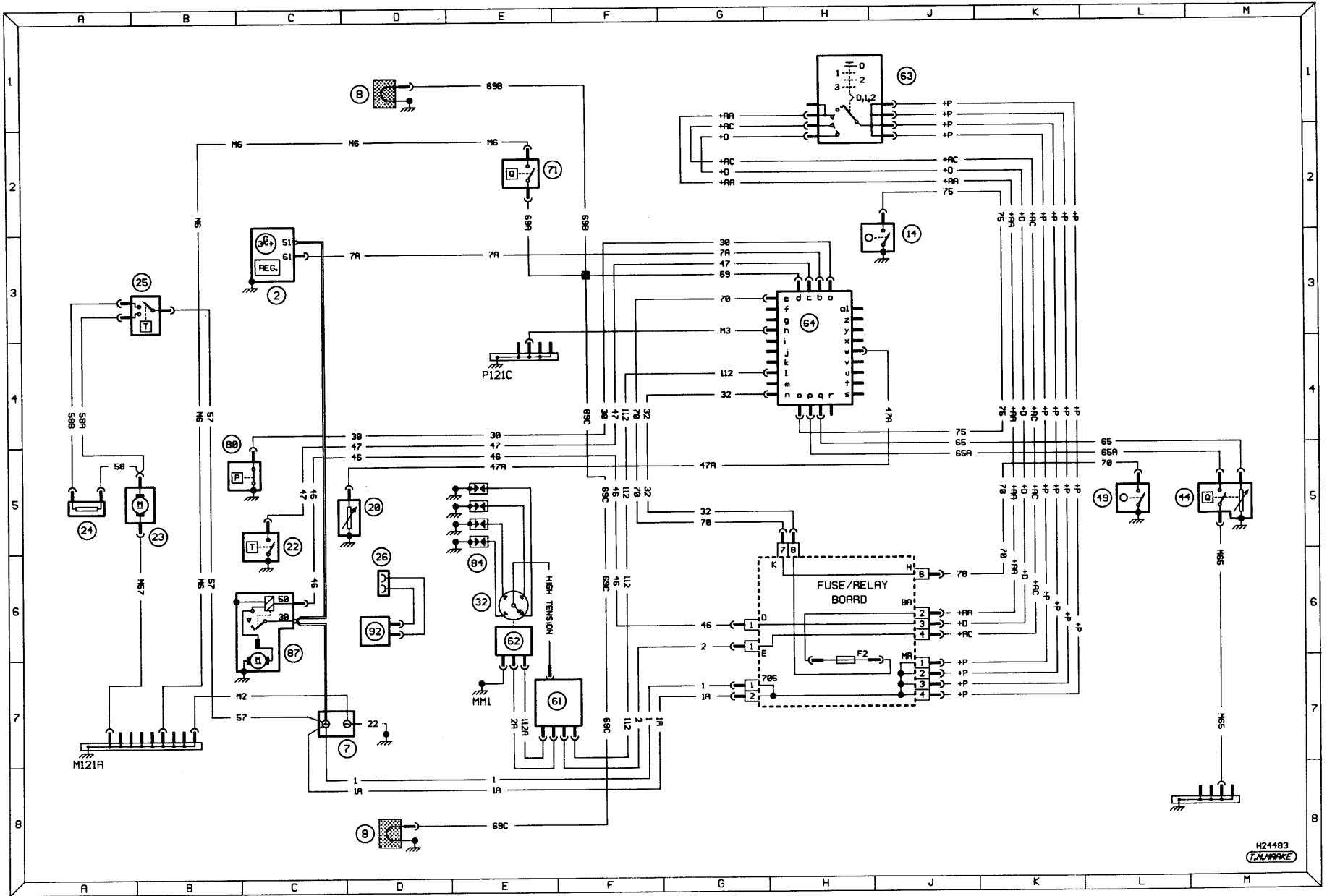


Diagram1a: Typical starting, charging, ignition, cooling fan, warning lamps and gauges (TU1, TU3 and TU9 engine models)

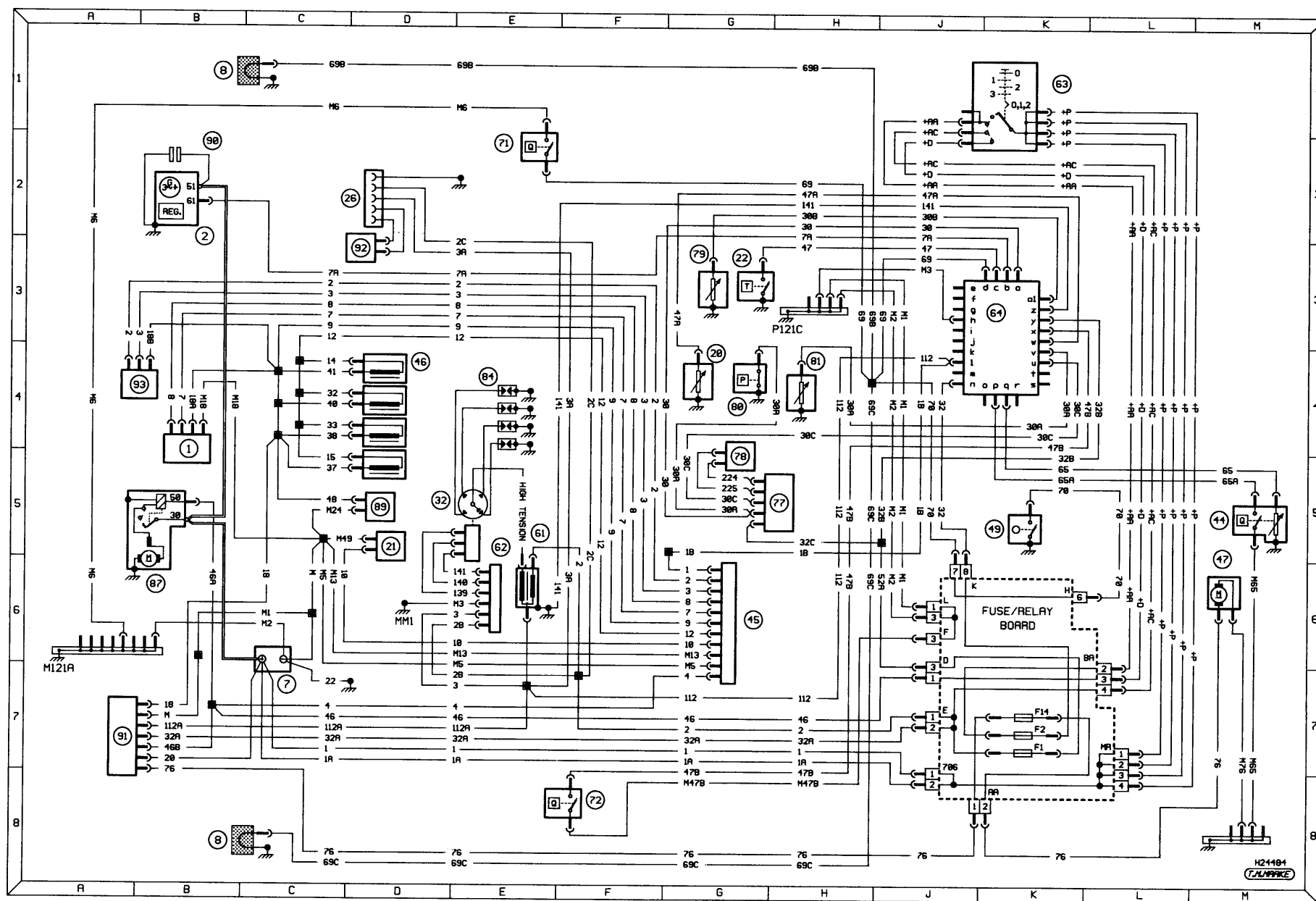


Diagram 1b: Typical engine management, warning lamps and gauges (XU5J/JA and XU9JA engine models)

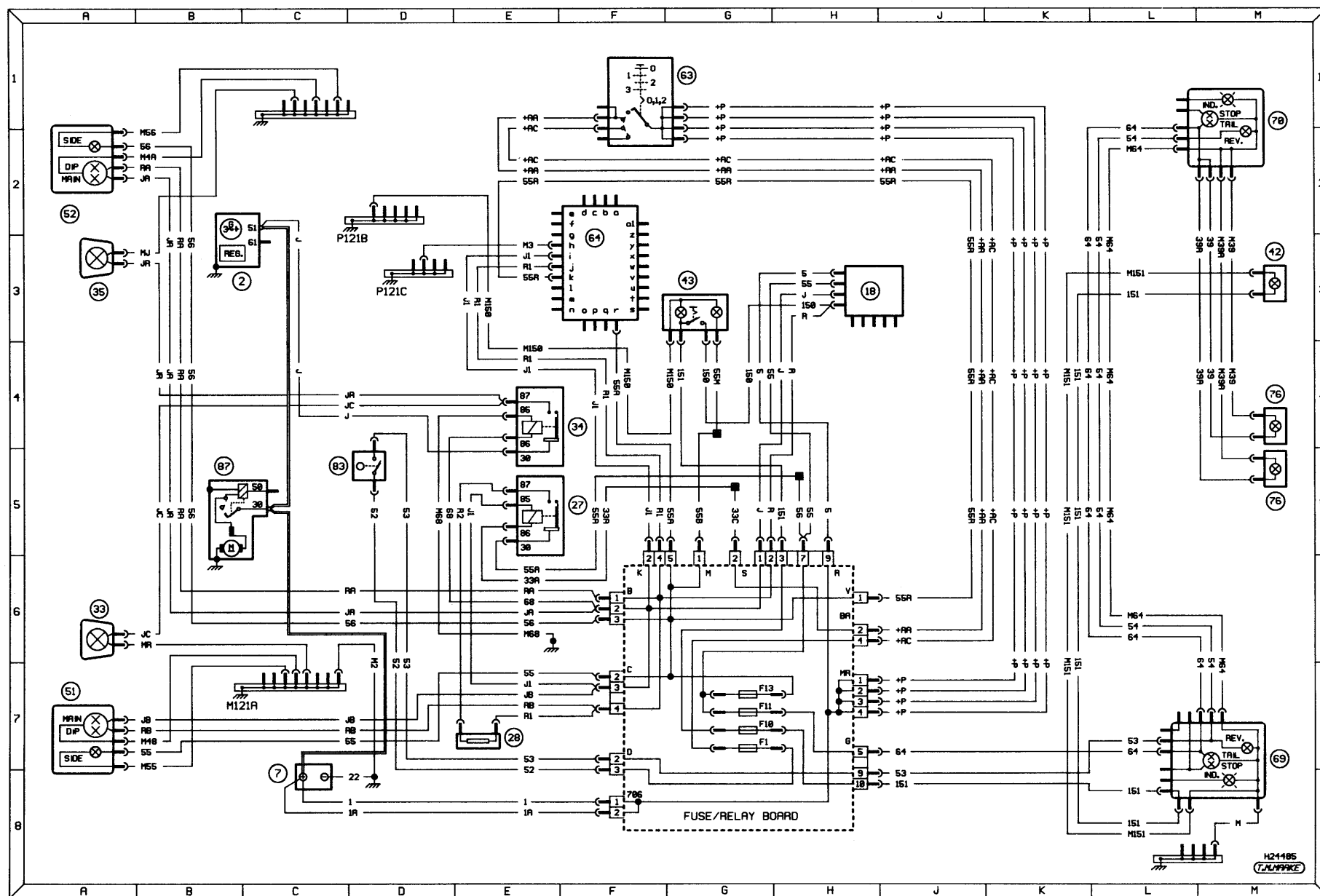


Diagram 2: Typical exterior lighting - reversing lamps, foglamps, sidelamps and headlamps



12

**Diagram 3: Typical ancillary circuits - wash/wipe, horn, heater blower and heated rear window**



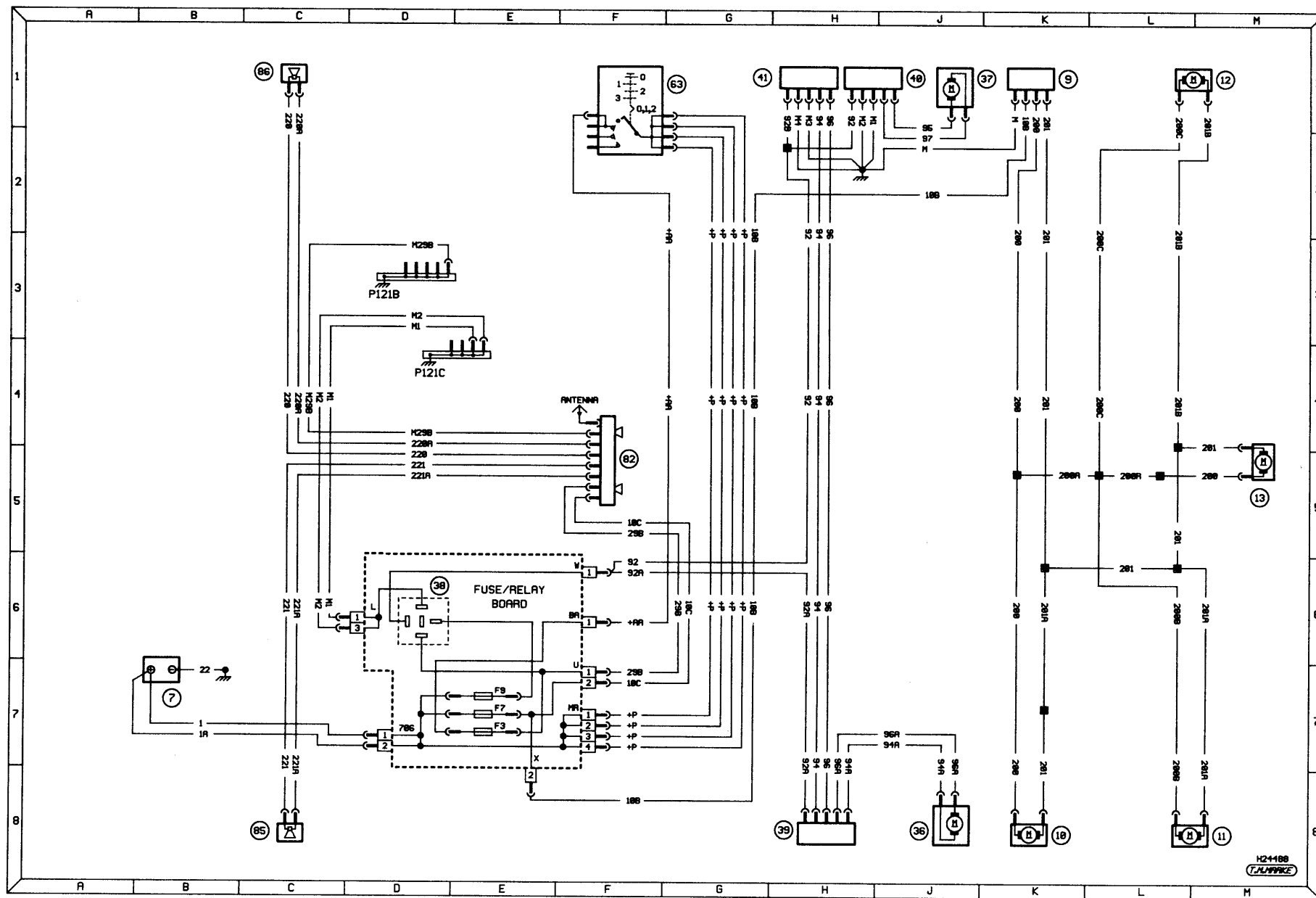
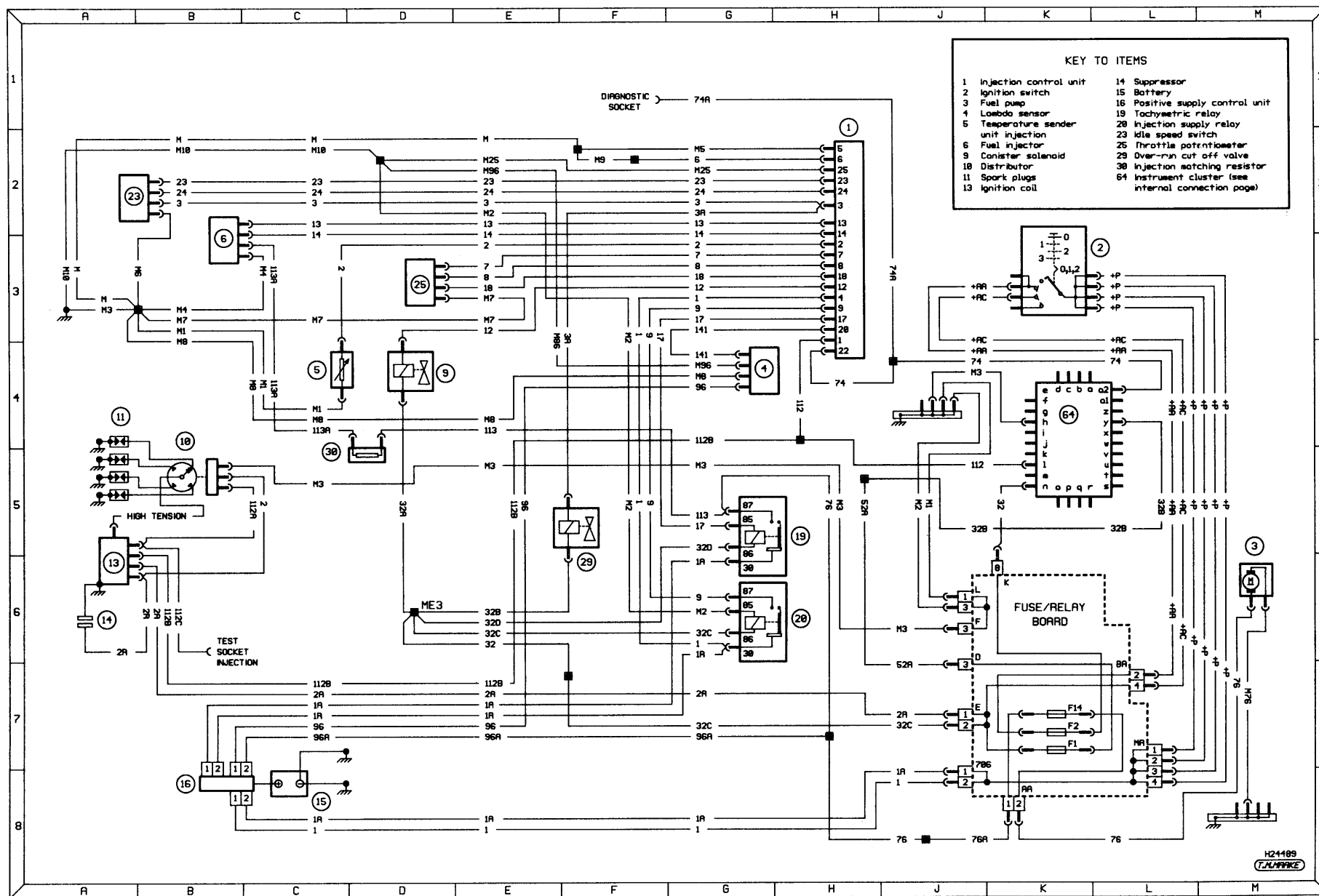
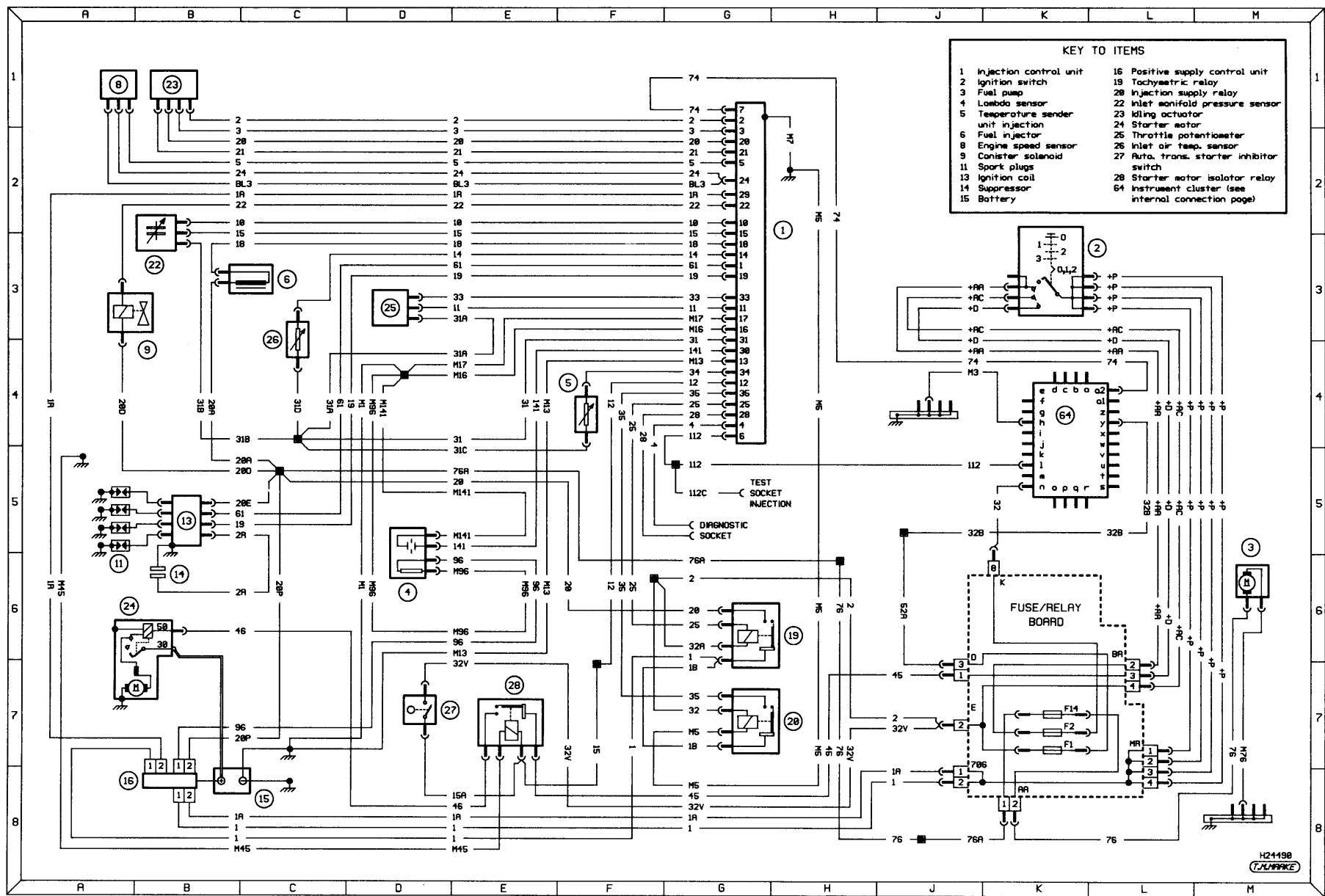


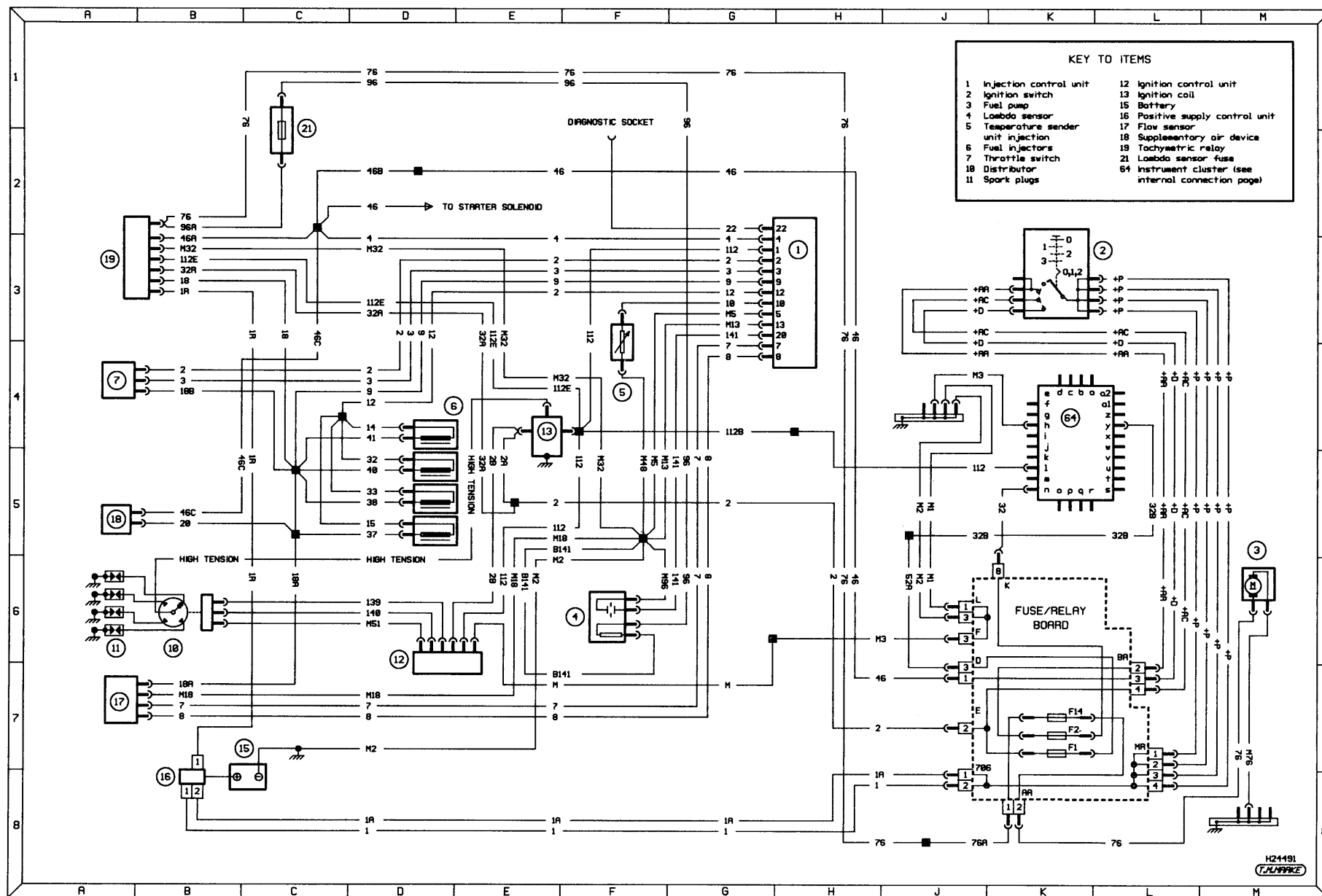
Diagram 3a: Typical ancillary circuits - electric windows, central locking and radio/cassette

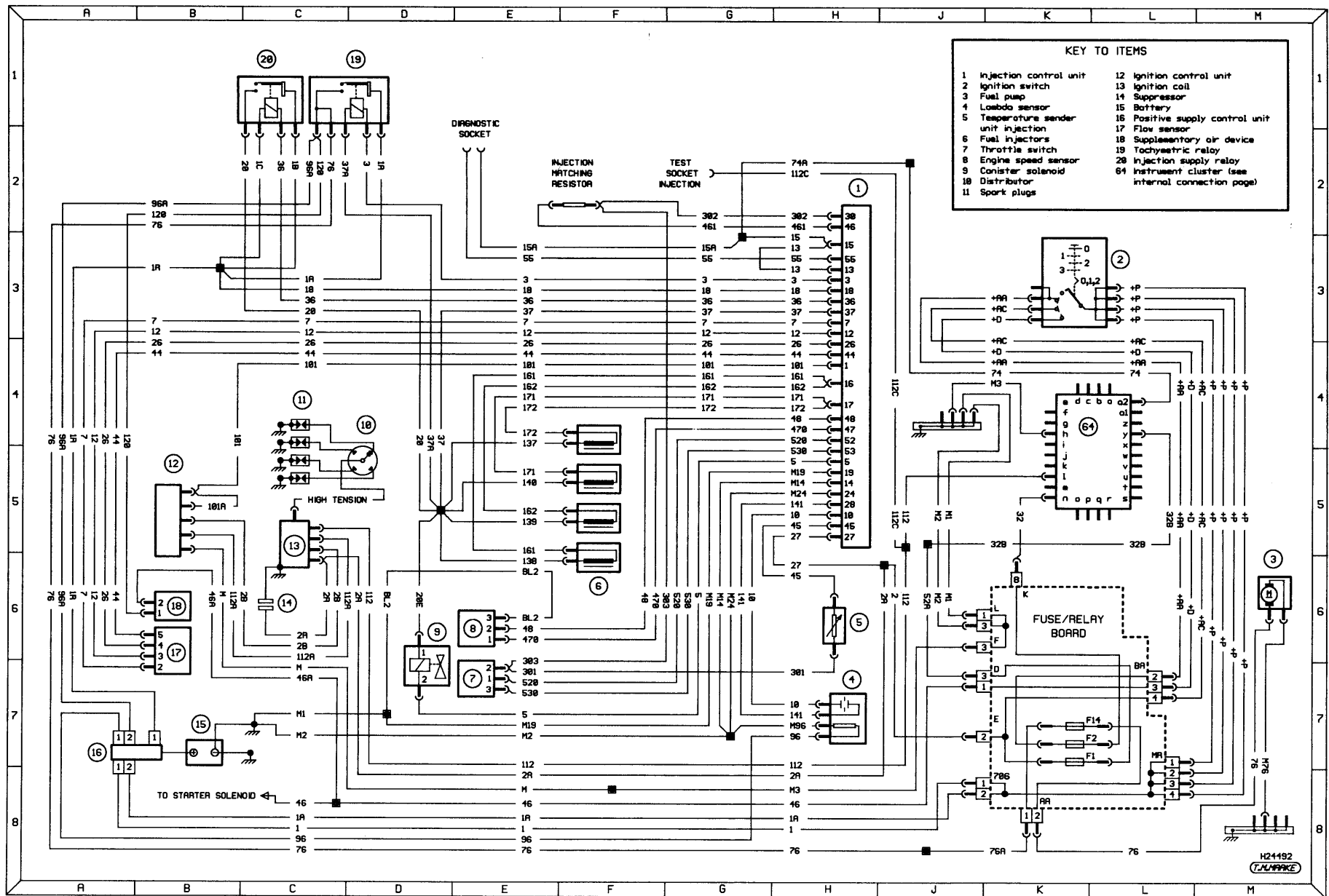


Supplementary diagram A: Typical engine management (TU3M/Z and TU3FM/L engine models)



Supplementary diagram B: Typical engine management (TU1M/L and XU5M3/Z/L engine models)





Supplementary diagram D: Typical engine management (XU9JA/L engine models)